

MC3R Antibody (Center)
Affinity Purified Rabbit Polyclonal Antibody (Pab)
Catalog # AP8719c

Specification

MC3R Antibody (Center) - Product Information

Application	FC, WB,E
Primary Accession	P41968
Reactivity	Human
Host	Rabbit
Clonality	Polyclonal
Isotype	Rabbit IgG
Calculated MW	36043
Antigen Region	86-112

MC3R Antibody (Center) - Additional Information

Gene ID 4159

Other Names

Melanocortin receptor 3, MC3-R, MC3R

Target/Specificity

This MC3R antibody is generated from rabbits immunized with a KLH conjugated synthetic peptide between 86-112 amino acids from the Central region of human MC3R.

Dilution

FC~~1:10~50

WB~~1:1000

E~~Use at an assay dependent concentration.

Format

Purified polyclonal antibody supplied in PBS with 0.09% (W/V) sodium azide. This antibody is purified through a protein A column, followed by peptide affinity purification.

Storage

Maintain refrigerated at 2-8°C for up to 2 weeks. For long term storage store at -20°C in small aliquots to prevent freeze-thaw cycles.

Precautions

MC3R Antibody (Center) is for research use only and not for use in diagnostic or therapeutic procedures.

MC3R Antibody (Center) - Protein Information

Name MC3R

Function Receptor for MSH (alpha, beta and gamma) and ACTH. This receptor is mediated by G

proteins which activate adenylate cyclase. Required for expression of anticipatory patterns of activity and wakefulness during periods of limited nutrient availability and for the normal regulation of circadian clock activity in the brain.

Cellular Location

Cell membrane; Multi-pass membrane protein.

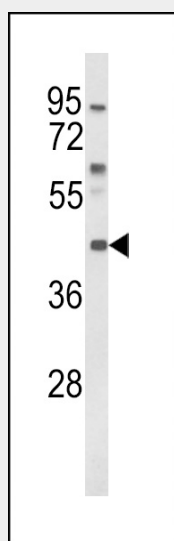
Tissue Location

Brain, placental, and gut tissues.

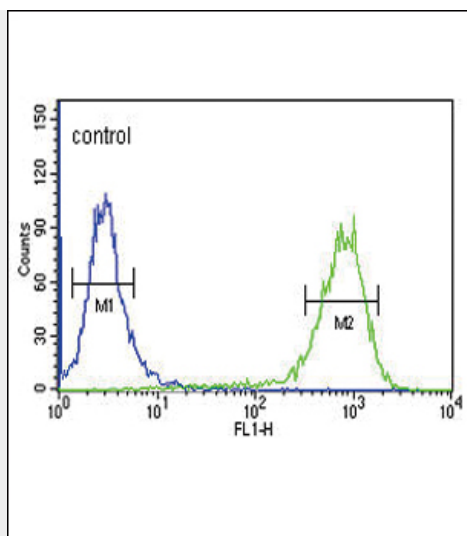
MC3R Antibody (Center) - Protocols

Provided below are standard protocols that you may find useful for product applications.

- [Western Blot](#)
- [Blocking Peptides](#)
- [Dot Blot](#)
- [Immunohistochemistry](#)
- [Immunofluorescence](#)
- [Immunoprecipitation](#)
- [Flow Cytometry](#)
- [Cell Culture](#)

MC3R Antibody (Center) - Images

Western blot analysis of MC3R Antibody (Center) (Cat. #AP8719c) in K562 cell line lysates (35ug/lane). MC3R (arrow) was detected using the purified Pab.



MC3R Antibody (Center) (Cat. #AP8719c) flow cytometric analysis of K562 cells (right histogram) compared to a negative control cell (left histogram). FITC-conjugated goat-anti-rabbit secondary antibodies were used for the analysis.

MC3R Antibody (Center) - Background

MC3R is a G-protein-coupled receptor for melanocyte-stimulating hormone and adrenocorticotrophic hormone that is expressed in tissues other than the adrenal cortex and melanocytes. This gene maps to the same region as the locus for benign neonatal epilepsy.

MC3R Antibody (Center) - References

Magenis, R.E., et al., *Mamm. Genome* 5 (8), 503-508 (1994)
Konda, Y., et al., *J. Biol. Chem.* 269 (18), 13162-13166 (1994)